

# COVID-19 and Vaccination Programme Update Health Scrutiny Committee

Sarah Doran, Consultant in Public Health  
Dr Manisha Kumar, Medical Director, MHCC

23 June 2021

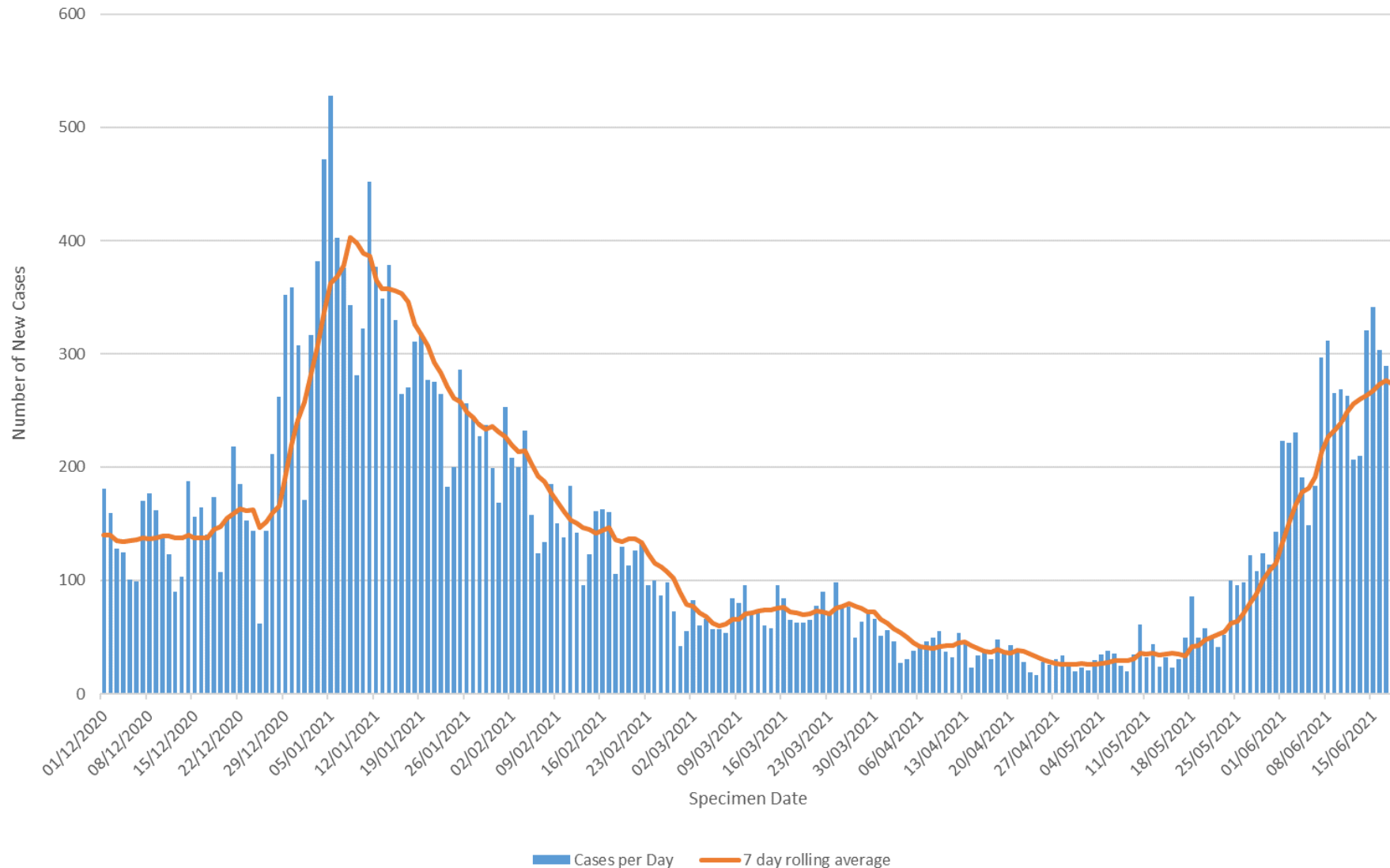
Headline Figures  
7-days ending Friday 18 June 2021

Measure	All Ages	60+
Total number of new cases	1,913	67
Average number of new cases per day	273	10
Case detection rate per 100,000	346.0	94.1
7-day rate of change (%)	10.0%	109.4%

Note: Figures for 16-18 June are provisional and subject to possible upward revision

# Daily number of confirmed COVID-19 cases over time and 7-day rolling average in Manchester, by specimen date (1 December 2020 to 18 June 2021)

Data for the most recent 3 days (16-18 June) is provisional and subject to change



Number of confirmed cases of COVID-19 and rate per 100,000 population in Manchester, by age group: 18 June 2020 (7 day total)

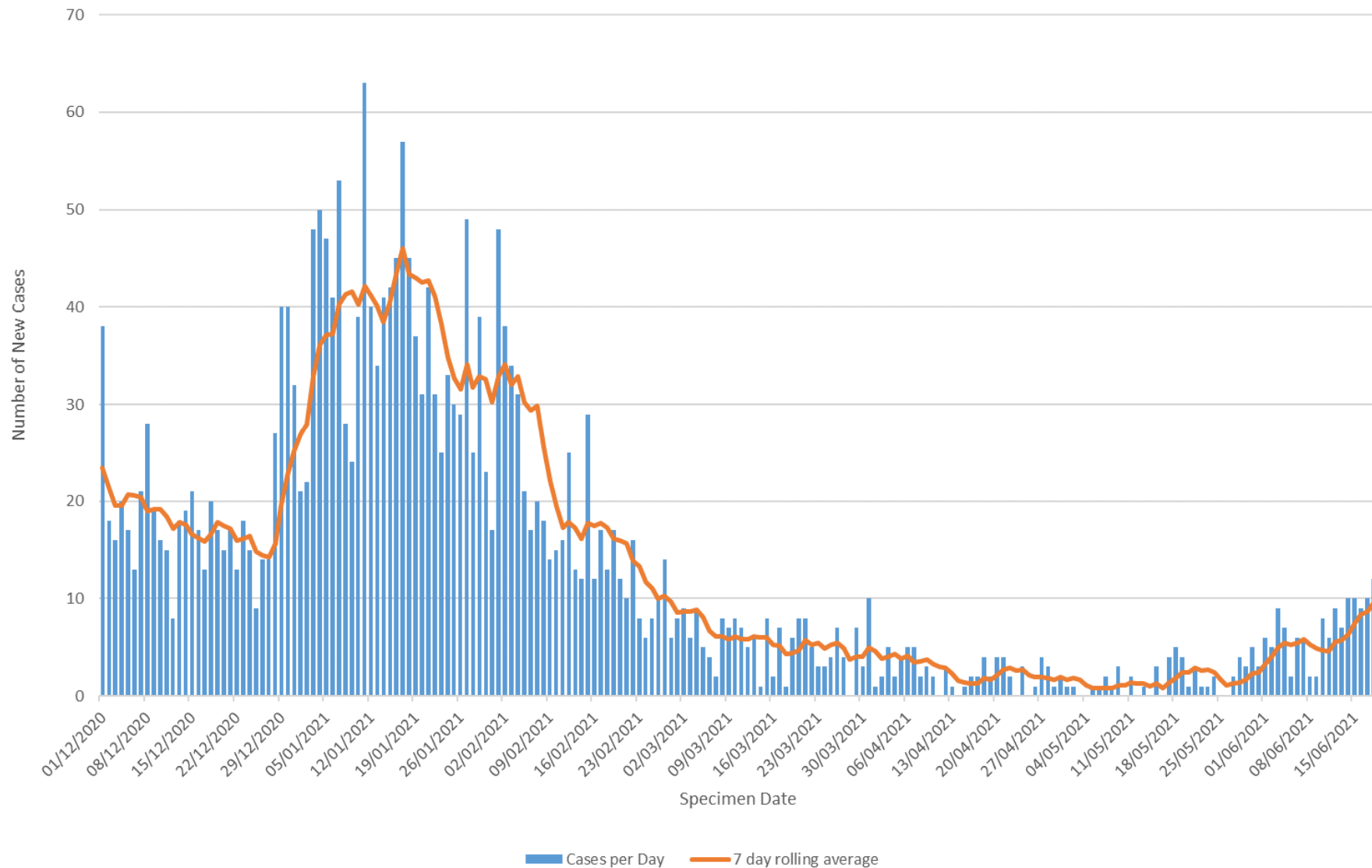
Data for the most recent 3 days (16-18 June) is provisional and subject to change

	Number of cases	Rate per 100,000	Abs. change	7-day rate of change*
Pre-school (0-4 years)	31	83.5	7	29.2%
Primary school (5-10 years)	105	242.1	-5	-4.5%
Secondary school (11-16 years)	223	603.6	77	52.7%
Older teenagers (17-18 years)	89	746.6	37	71.2%
Younger working age (19-24 yrs)	530	665.8	35	7.1%
Working age (25-59 years)	868	318.3	-12	-1.4%
Younger older people (60-79 yrs)	60	103.8	31	106.9%
Older people (80+ years)	7	52.4	4	133.3%
<b>Total (All ages)</b>	<b>1,913</b>	<b>346.0</b>	<b>174</b>	<b>10.0%</b>

\* Compared with prior 7-day period 05/06/2021 to 11/06/2021

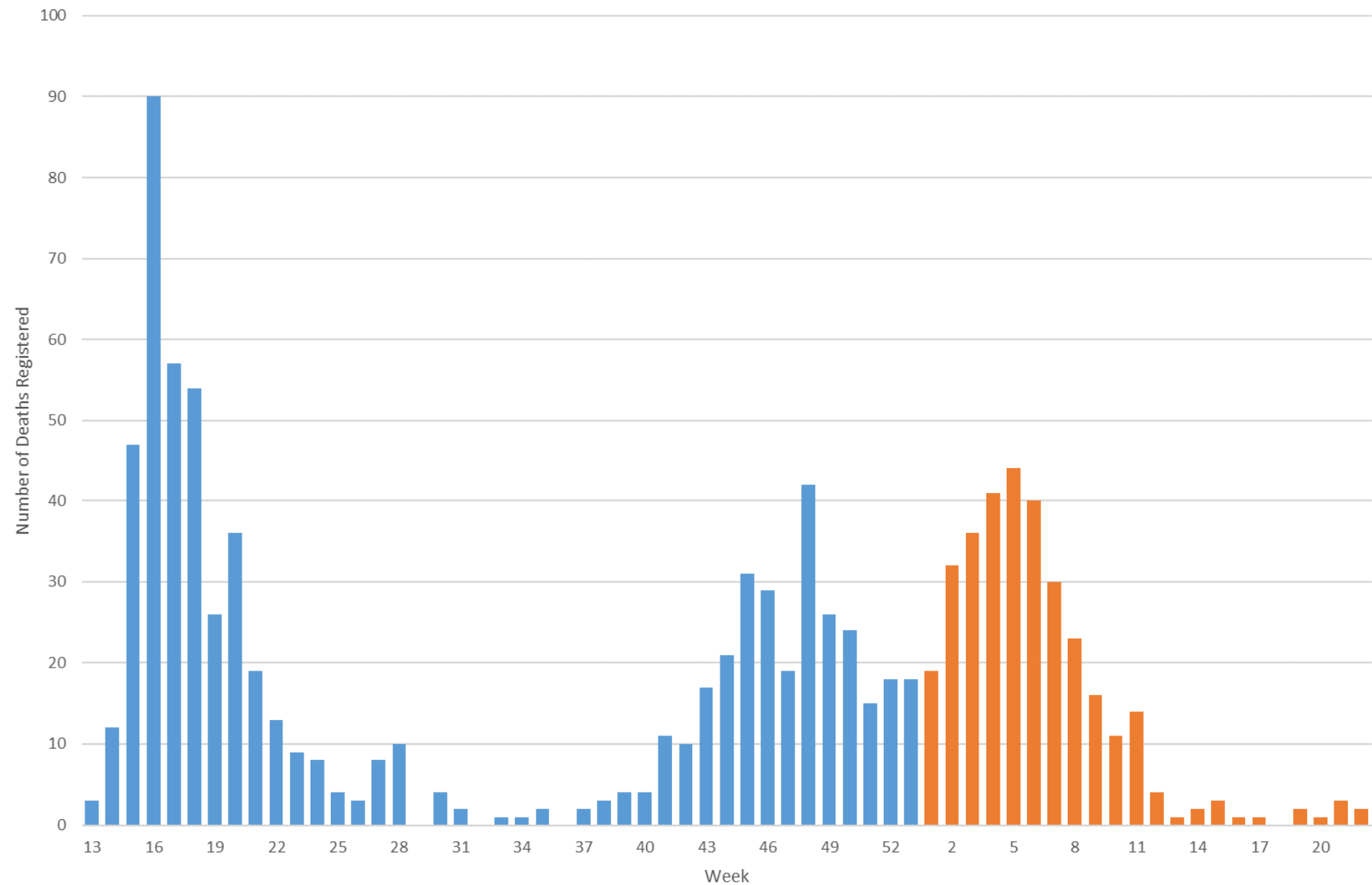
# Daily number of confirmed COVID-19 cases over time and 7-day rolling average in persons aged 60 and over in Manchester by specimen date (1 December 2020 to 18 June 2021)

Data for the most recent 3 days (16-18 June) is provisional and subject to change



# Total Number of Deaths Involving COVID-19 per Week in Manchester Residents

## Deaths registered between Week 13 2020 and Week 22 2021



# Manchester enhanced response area plan

- Manchester enhanced response area plan has been produced in response to the Government announcement on 8th June that Greater Manchester would be given this designated status
- The Manchester plan will focus on the following:
  1. Targeted vaccination drive
  2. Targeted communications and engagement
  3. Identifying and breaking chains of transmission (testing, contact tracing and support to self isolate)
  4. Additional measures
  5. Mitigating the risk of transmission in Universities

# COVID-19 Vaccination programme update

23 June 2021

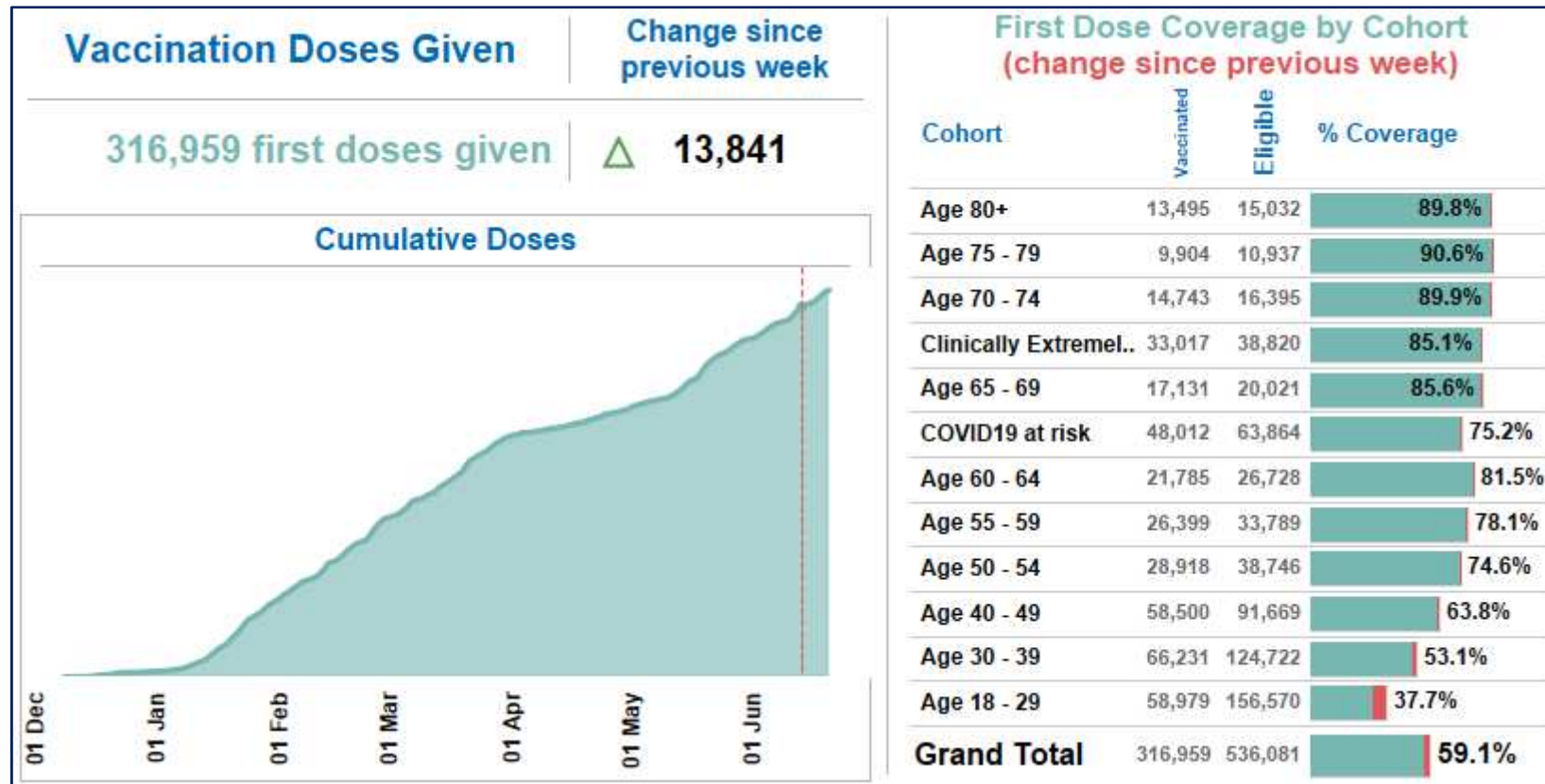
# COVID-19 Vaccination Programme

## Summary

- Covid-19 vaccination coverage continues to increase rapidly in Manchester with **316,959** people having received the first dose of the vaccine as at 20 June 2021. Of this number, **194,976** have now received a second dose as well.
- This means that the vaccine programme has already delivered well over **500,000** jabs to local people. The programme focus is on vaccinating as many local people as possible whilst ensuring no communities in the city are being left behind.
- Partnership working remains at the heart of the programme with Community Pharmacy MHCC, MCC, MFT and MLCO working together, supported by c. **3000** local people who have volunteered to play their part. We are also engaged with both regional and GM teams.
- Delivery of the vaccine programme continues to be through a combination of primary care sites, pharmacy sites, the GM Mass Vaccination Centre, and a range of 'pop-up' and 'walk-in' clinics in locations across Manchester.
- For the next 4 weeks, we are further boosting our vaccination programme to meet the current challenges we are facing with the Delta variant. This will include two new temporary vaccination sites set up in Moss Side and Belle Vue.

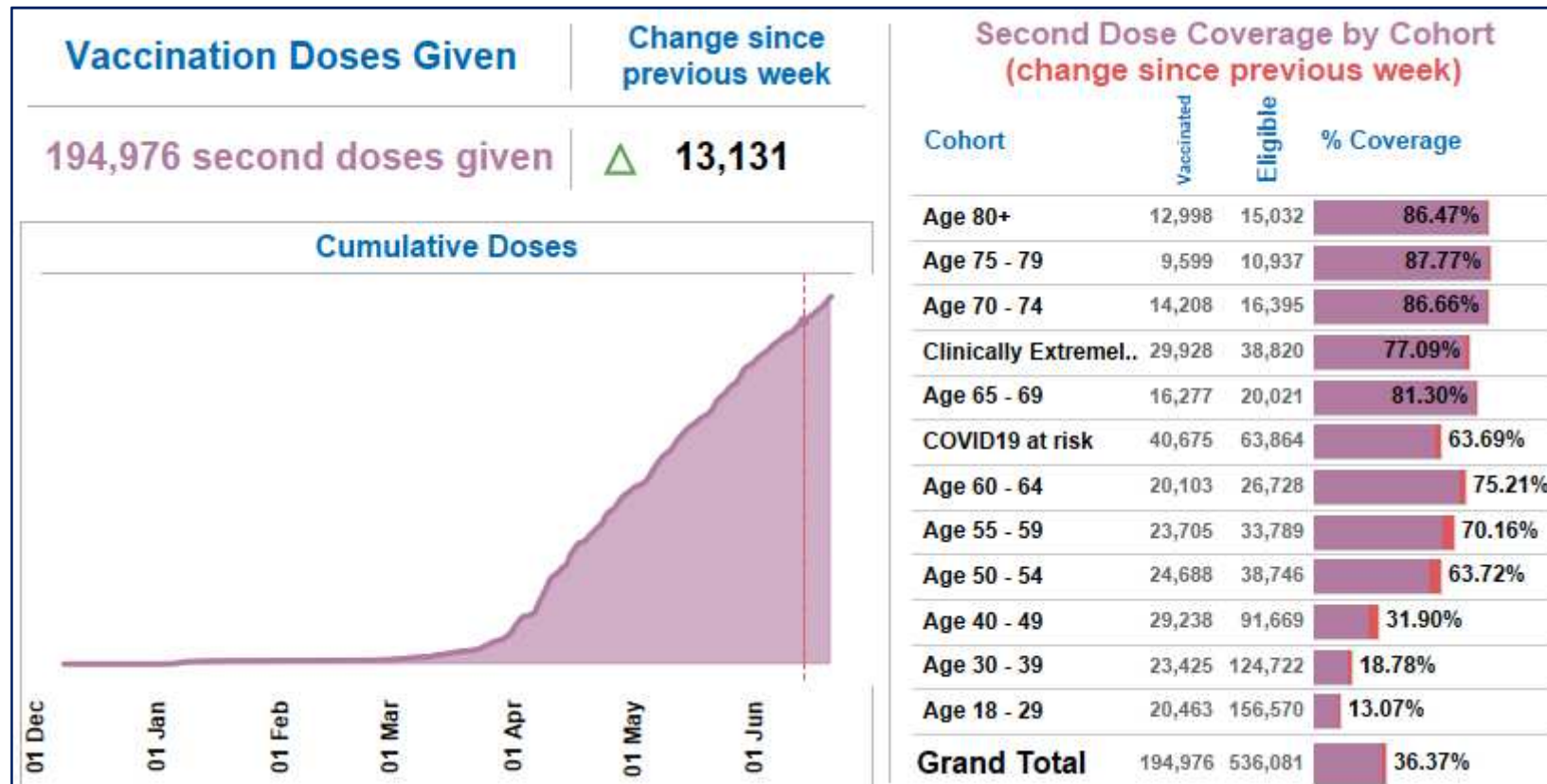
# COVID-19 Vaccination Programme

## First dose vaccine coverage as at 20 June 2021



# COVID-19 Vaccination Programme

## Second dose vaccine coverage as at 20 June 2021



# COVID-19 Vaccination Programme

## Targeting inequalities – Cohorts 1 - 12, last 8 weeks

We aim for there to be no difference in coverage between white patients and those patients of other ethnic backgrounds. The table below tracks the difference, with a lower difference highlighting greater equality.

Ethnicity	Difference in Coverage from White Patients: 04 Jun	Difference in Coverage from White Patients: 18 Jun	Change
White and Asian	17.9%	16.7%	-1.1%
Declined to provide ethnicity status	18.1%	18.3%	0.2%
Bangladeshi	2.5%	2.7%	0.2%
Any other ethnic group	27.1%	27.3%	0.3%
Indian	9.7%	10.1%	0.5%
Any other Mixed or Multiple ethnic background	25.0%	25.5%	0.5%
White and Black African	23.4%	23.9%	0.6%
Any other Asian background	21.2%	21.9%	0.6%
Pakistani	7.7%	8.8%	1.1%
Chinese	39.0%	40.2%	1.2%
Arab	22.2%	23.4%	1.2%
African	16.8%	18.4%	1.6%
No record of ethnicity status	33.8%	35.5%	1.7%
White and Black Caribbean	26.6%	28.3%	1.8%
Any other Black, African or Caribbean background	24.8%	26.7%	1.9%
Caribbean	18.5%	21.9%	3.4%

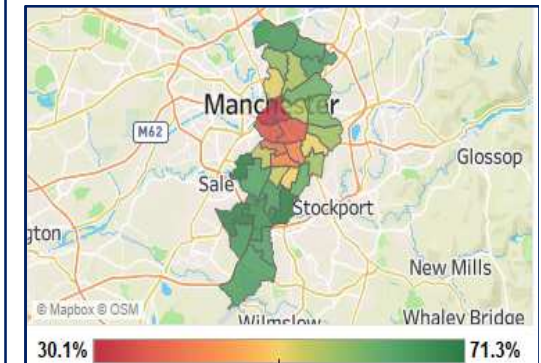
# COVID-19 Vaccination Programme

## Coverage by electoral ward – Cohorts 1- 12, 20 June 2021

Vaccinated	Eligible	% Coverage (increase from 2 weeks ago)	Ward	Vaccinated	Eligible	% Coverage (increase from 2 weeks ago)	
8,287	11,629	<div><div></div></div> 71.3%	Gorton and Abbey Hey	8,554	15,117	<div><div></div></div> 56.6%	
9,129	12,884	<div><div></div></div> 70.9%	Levenshulme	9,217	16,349	<div><div></div></div> 56.4%	
6,227	8,972	<div><div></div></div> 69.4%	Harpurhey	9,061	16,316	<div><div></div></div> 55.5%	
8,029	11,961	<div><div></div></div> 67.1%	Ancoats and Beswick	7,864	14,575	<div><div></div></div> 54.0%	
8,555	12,970	<div><div></div></div> 66.0%	Whalley Range	7,685	14,318	<div><div></div></div> 53.7%	
9,864	15,013	<div><div></div></div> 65.7%	Old Moat	7,478	14,071	<div><div></div></div> 53.1%	
8,549	13,013	<div><div></div></div> 65.7%	Cheetham	8,741	16,908	<div><div></div></div> 51.7%	
9,196	14,141	<div><div></div></div> 65.0%	Longsight	8,890	17,475	<div><div></div></div> 50.9%	
8,697	13,504	<div><div></div></div> 64.4%	Withington	7,403	14,679	<div><div></div></div> 50.4%	
8,152	12,671	<div><div></div></div> 64.3%	Rusholme	7,511	18,171	<div><div></div></div> 41.3%	
9,707	15,102	<div><div></div></div> 64.3%	Fallowfield	6,280	15,416	<div><div></div></div> 40.7%	
8,267	12,953	<div><div></div></div> 63.8%	Moss Side	7,730	19,827	<div><div></div></div> 39.0%	
9,365	15,185	<div><div></div></div> 61.7%	Ardwick	8,932	25,201	<div><div></div></div> 35.4%	
ewton ..	9,353	15,319	<div><div></div></div> 61.1%	Hulme	6,611	19,096	<div><div></div></div> 34.6%
aw	9,327	15,839	<div><div></div></div> 58.9%	Piccadilly	4,329	14,051	<div><div></div></div> 30.8%
8,073	13,927	<div><div></div></div> 58.0%	Deansgate	3,782	12,752	<div><div></div></div> 29.7%	

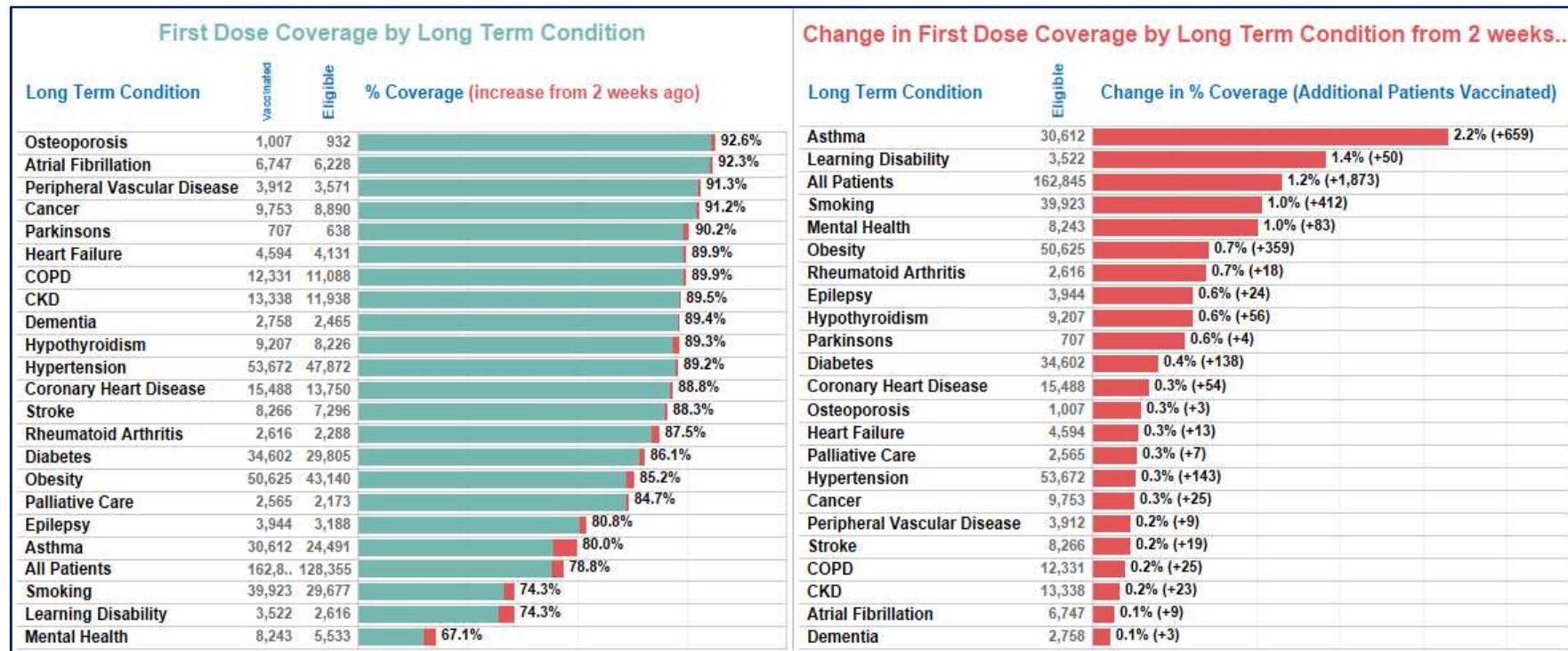
Manchester GP records have been used to identify addresses. Ward residents not registered with a Manchester practice will therefore not be included in these figures

As a result of the way people have been vaccinated in order of age, wards with a younger population be showing lower coverage rates.



# COVID-19 Vaccination Programme

## Coverage by Long Term Condition– Cohorts 1- 6, 20 June 2021



# COVID-19 Vaccination Programme

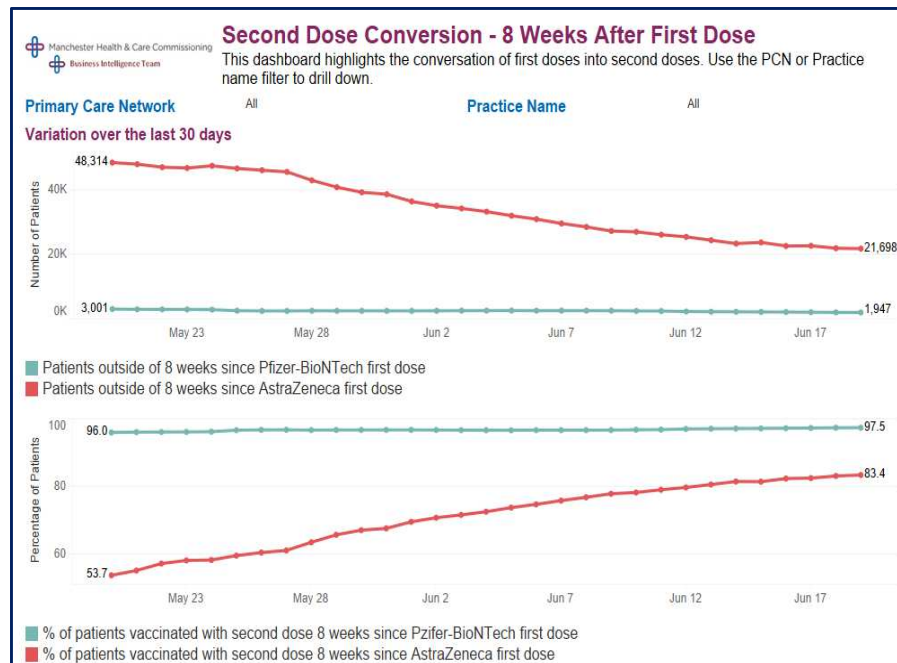
## Coverage by gender and target group– Cohorts 1- 12, 20 June 2021

First Dose Coverage by Gender				
Ethnicity	Gender	Vaccinated	Eligible	% Coverage (increase from 2 weeks ago)
All	Female	86,630	110,345	78.5%
	Male	82,030	111,150	73.8%
White	Female	56,776	65,958	86.1%
	Male	51,529	60,800	84.8%
Asian or Asian British	Female	11,801	15,103	78.1%
	Male	11,975	15,987	74.9%
Other ethnic group	Female	1,688	2,452	68.8%
	Male	1,877	2,965	63.3%
Black, African, Caribbean or Black British	Female	5,927	9,303	63.7%
	Male	5,595	8,760	63.9%
Mixed or Multiple ethnic groups	Female	1,595	2,523	63.2%
	Male	1,402	2,191	64.0%
Status Unknown	Female	8,843	15,006	58.9%
	Male	9,652	20,447	47.2%

Long Term Condition	Gender	Vaccinated	Eligible	% Coverage (increase from 2 weeks ago)
Learning Disability	Female	1,034	1,340	77.2%
	Male	1,582	2,182	72.5%
	Grand Total			74.3%
Serious Mental Illness	Female	2,652	3,740	70.9%
	Male	2,892	4,517	64.0%
	Grand Total			67.1%

# COVID-19 Vaccination Programme

## Second dose conversion – 8 weeks after first dose

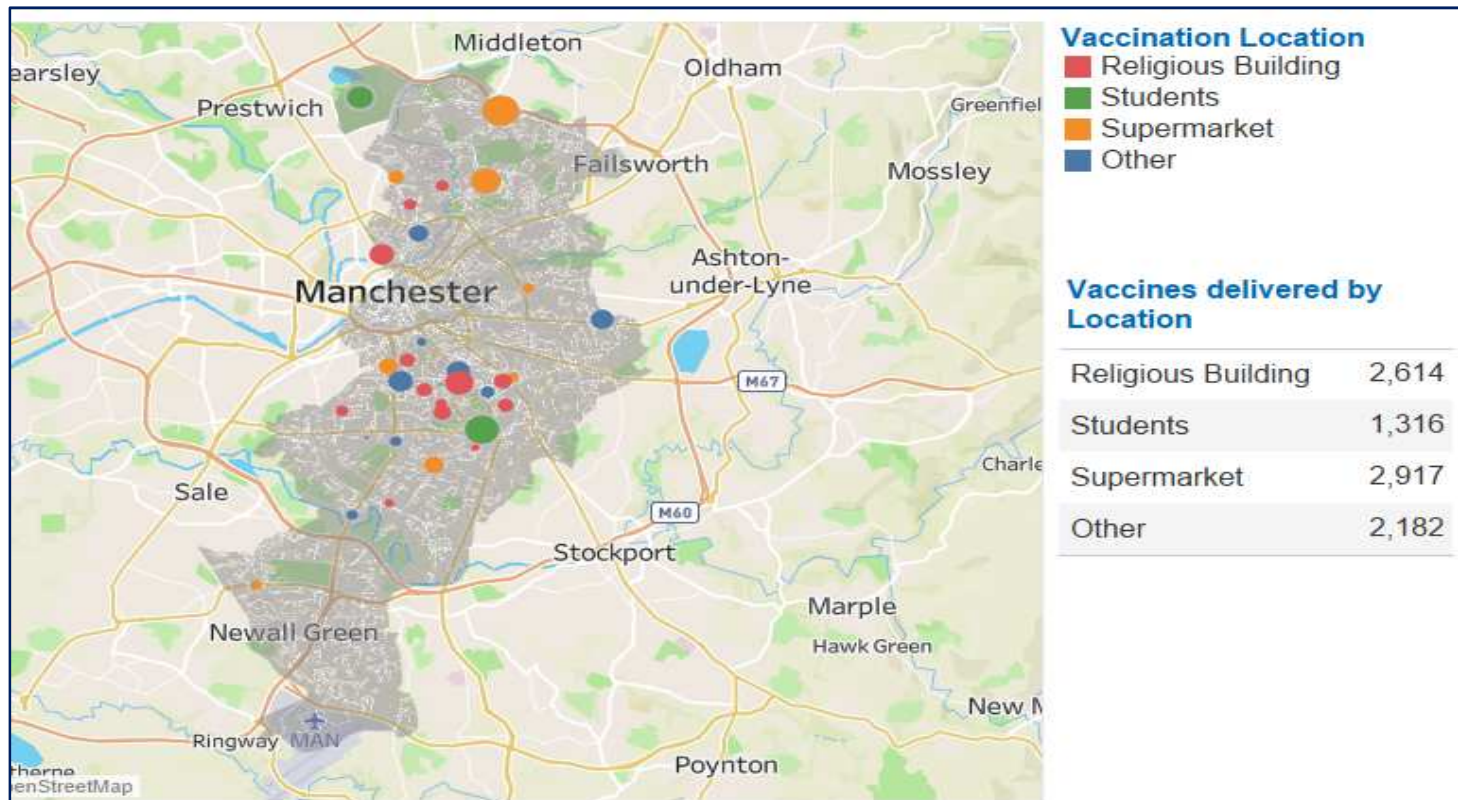


Ethnicity	% of patients vaccinated with Second Dose 8 weeks after First Dose			Patients not receiving Second Dose 12 weeks after First Dose		
	AZ	Pfizer	Total	AZ	Pfizer	Total
<b>Grand Total</b>	<b>83.4%</b>	<b>97.5%</b>	<b>88.6%</b>	<b>21,698</b>	<b>1,947</b>	<b>23,645</b>
Any other Black, African or Caribbean background	75.0%	96.4%	81.3%	355	21	376
Pakistani	77.1%	94.2%	81.6%	2,938	262	3,200
Arab	77.8%	96.1%	82.5%	166	10	176
White and Black African	76.8%	96.8%	82.7%	169	10	179
White and Black Caribbean	76.6%	95.8%	82.8%	153	13	166
African	76.4%	95.9%	82.9%	1,485	127	1,612
Any other ethnic group	77.6%	96.9%	83.2%	645	36	681
Any other Asian background	77.9%	96.7%	83.7%	586	39	625
Bangladeshi	79.3%	98.6%	84.0%	372	8	380
Gypsy or Irish Traveller	79.2%	100.0%	85.3%	5	0	5
White and Asian	79.1%	97.1%	85.5%	93	7	100
Any other Mixed or Multiple ethnic background	82.2%	96.9%	86.3%	161	11	172
Any other White background	81.4%	97.1%	86.4%	967	70	1,037
Caribbean	81.1%	96.6%	86.4%	368	34	402
Chinese	82.4%	96.7%	86.4%	368	27	395
No record of ethnicity status	81.4%	97.0%	86.7%	2,791	227	3,018
Declined to provide ethnicity status	82.1%	96.7%	86.9%	230	21	251
Indian	80.5%	97.7%	88.9%	472	54	526
English, Welsh, Scottish, Northern Irish or British	86.9%	98.0%	91.4%	9,129	926	10,055
Irish	88.5%	97.7%	92.8%	245	44	289
Roma	100.0%		100.0%	0		0

# COVID-19 Vaccination Programme

## Map of COVID Vaccination pop-up delivery

This map shows where vaccination clinics have taken place so far. The greater the number of vaccines given at a site, the larger the circle.



# COVID-19 Vaccination Programme

## Pop-up clinics for Manchester residents

Clinics are available for all Manchester residents over 18. As they walk in clinics you may need to queue depending on demand. Search Manchester City Council pop up clinics for more info



### Newton Heath Health Centre

Pfizer first doses only for over 18s.

#### Dates and times

- Monday 21 June - 11am - 12.45 & 2pm - 6pm
- Tuesday 29 June 9-12 & 2pm - 5

Walk in clinic, no appointment needed

2 Old Church St, Manchester, M40 2JF

### North Manchester General Hospital

Pfizer first doses only for over 18s.

#### Dates and times

- Monday 21 June - 8am to 4pm
- Tuesday 22 June - 12pm to 8pm
- Wednesday 23 June - 8am to 4pm

Walk in clinic, no appointment needed

North Manchester General Hospital (QUAD Entrance), Delaunays Road, Crumpsall, M8 5RB

### Irish World Heritage Centre

Pfizer and AZ first and second doses (if it has been 8 weeks since your first).

#### Dates and times

- Monday 21 June - 11.30am-6.30pm (Pfizer)
- Thursday 24 June - 4.30pm-7.30pm (Pfizer)
- Friday 25 June - 4-6.30pm (AZ)

Walk in or pre-book by calling 0800 092 4020 or 0161 947 0770. Lines are open Monday-Friday 8am-6pm

Irish World Heritage Centre, 1 Irish Town Way, Cheetham Hill, Manchester M8 0AF

### Plant Hill Clinic

Pfizer and AstraZeneca first and second doses (if it has been 8 weeks since your first).

#### Date and time

Tuesday 22 June - 9am - 1pm (AZ) & 2pm - 6pm (Pfizer)

Walk in or pre-book by calling

0800 092 4020 or 0161 947 0770. Lines are open Monday-Friday 8am-6pm

Plant Hill Clinic, Plant Hill Road, Blackley, Manchester, M9 8LX

### Cheetham Academy School

Pfizer first and second doses (if it has been 8 weeks since your first) for over 18s.

#### Date and time

Tuesday 22 June - 9.15am to 12pm

Walk in or pre-book by calling

0800 092 4020 or 0161 947 0770. Lines are open Monday-Friday 8am-6pm

Cheetham Academy School, Halliwell Lane, Cheetham Hill, M8 9FR

### Tesco Cheetham Hill

AstraZeneca first dose for over 40's. Second doses for anyone if it has been 8 weeks since your first.

#### Date and time

Wednesday 23 June, 2pm to 5.30pm

Walk in or pre-book by calling

0800 092 4020 or 0161 947 0770. Lines are open Monday-Friday 8am-6pm

Tesco Cheetham Hill, Thomas St (Off Bury Old Road), Cheetham Hill, Manchester, M8 5DP

### Woodhouse Park Lifestyle Centre

Pfizer first and second doses (if it has been 8 weeks since your first) for over 18s.

#### Date and time

Friday 25 June - 1.30 - 5.30

Walk in clinic, no appointment needed

Woodhouse Park Lifestyle Centre 206 Portway, Wythenshawe, M22 1QW